

Electric submersible pumps for waste water containing solids. Spherical clearance 30 and 42 mm.

TP 30

Application

Homa TP 30 series pumps are suitable for pumping drainage water or waste water. With their 30 mm spherical clearance they are especially able to pump liquids with larger suspended solids like fibres, textiles etc. They are used for various applications in public and private sector, trade and industry.

DIN EN 12050-3: Conformity and design approved and controlled by LGA.

Installation: Transportable or permanent. Models with float switch control for automatic pump operation, depending on liquid level in the sump.

Pumped liquid: Clear water and drainage water, sewage containing soft solids. Max. liquid temperature: 40°C short term up to 60°C.

Operation: Permanent (S1).

Design

Fully submersible, compact integrated motor-pump unit consisting of:

Pump: Single stage centrifugal pump with horizontal discharge BSP 2" M.

Impellers: M = Open single channel impeller for liquids containing impurities and sludge with solid particles.

V = Vortex impeller for liquids containing a high level of impurities or fibrous matter and containing gas.

Motor: Fully submersible, pressure tight electric motor, oil filled. Insulation class H. Degree of protection IP 68. Thermal sensors embedded in the winding on request (standard with model Ex).

Cable: H07 RN - F4 G 1,5

Model Ex: H07 RN - F Plus6 G 1,5

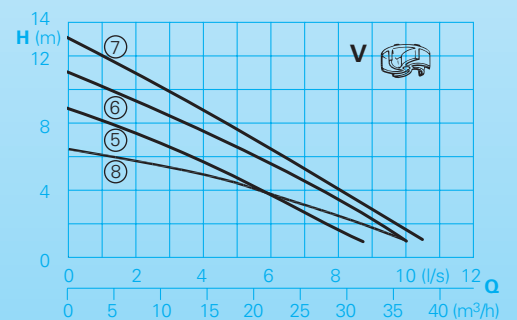
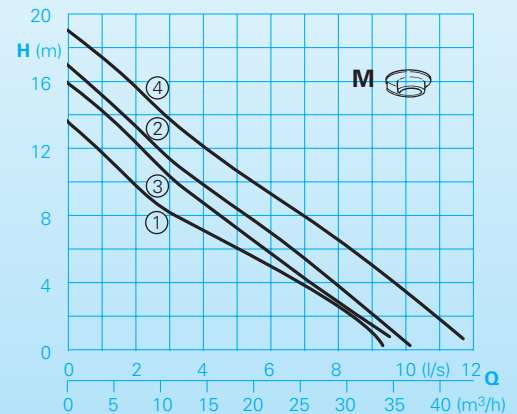
Shaft/Bearing: Large diameter stainless rotor shaft, pre-lubricated bearings.

Seals: Combination of mechanical seals (silicon-carbide/silicon-carbide) and lip seals in a separate oil chamber.

Explosion protection: All models available with explosion proof motors according to

Ⓜ II 2 G Ex c d II B T4(T3)

Performances



Technical Data

Curve No.	Pump type	Motor		Capacitor* (µF)	Speed (rpm)	Nominal current (A)	Spherical clear. (mm)	Weight standard model (kg)	Ex-model (kg)
		P ₁ (kW)	P ₂ (kW)						
①	TP 30M 11/2 W(A)(Ex)	1,0	0,7	25	2900	4,3	30	26,0	31,0
②	TP 30M 17/2 W(A)(Ex)	1,6	1,2	30	2900	7,5	30	27,0	32,0
③	TP 30M 13/2 D(A)(Ex)	1,2	0,9		2900	2,1	30	26,0	31,0
④	TP 30M 17/2 D(A)(Ex)	1,6	1,2		2900	2,9	30	27,0	32,0
⑤	TP 30V 13/2 W(A)(Ex)	1,2	0,9	25	2900	5,1	30	26,0	31,0
⑥	TP 30V 17/2 W(A)(Ex)	1,6	1,2	30	2900	7,5	30	27,0	32,0
⑦	TP 30V 13/2 D(A)(Ex)	1,2	0,9		2900	2,1	30	26,0	31,0
⑧	TP 30V 17/2 D(A)(Ex)	1,6	1,2		2900	2,9	30	27,0	32,0
⑧	TP 30V 10/4 W(A)	1,0	0,7	30	1450	5,0	42	27,0	32,0
⑧	TP 30V 10/4 D(A)	1,0	0,7		1450	2,3	42	27,0	32,0

Model W: 230-240V/1Ph 50Hz

Model D: 400-415V/3Ph 50Hz

Model A: With automatic level control HOMA-Nivomatik

* **Capacitor:** For the operation it is necessary to install a capacitor in the control box.

Model Ex: Explosion proof

Materials

Pump housing, Impeller, Motor housing	Cast iron EN-GJL-250
Rotor shaft, screws	Stainless steel
Mechanical seal	Silicon-carbide
Seal kit	Perbonane

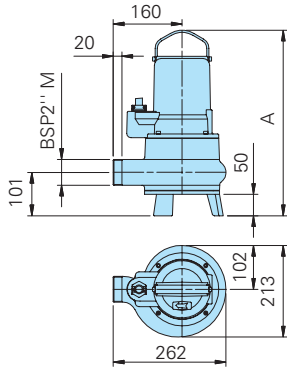
Equipment supplied

Pumps with base stand, without auto-coupling (see accessories): **Model W (230-240V/1 Ph):** Control box W19; WT19 fitted with overload protection, capacitor and plug. On-off switch, 10 m of cable. **Model D (400-415V/3Ph):** Control box D32; DT32 fitted with overload protection, on-off switch, 10 m of cable and phase inverter. **Model A:** With additional automatic level control, AS-float switch, control box WA10/19; DA10/32; DA10/12 with manual-auto switch and 10 m of cable. Model Ex with intrinsically safe control circuit relay.

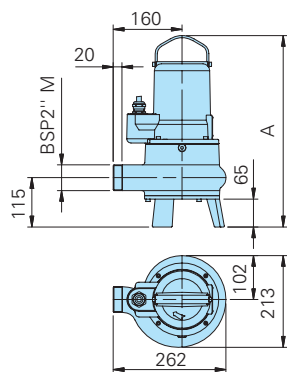
Installations and Dimensions (all dimensions in mm)

Free standing pump with base stand

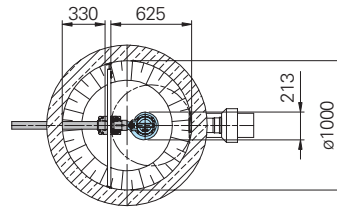
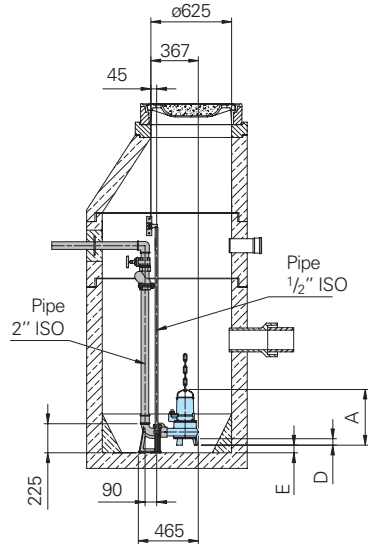
Pump type	Dim. A	D	E
TP30M(V).../2W(D)	431	50	59
TP30M(V).../2W(D)Ex	438	50	59



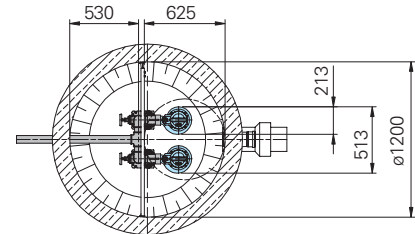
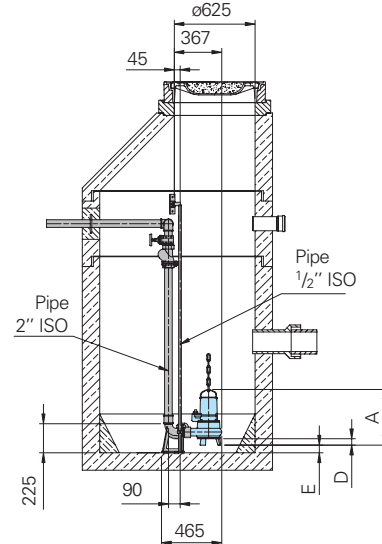
Pump type	Dim. A	D	E
TP30V10/4W(D)	445	65	46
TP30V10/4W(D)Ex	452	65	46



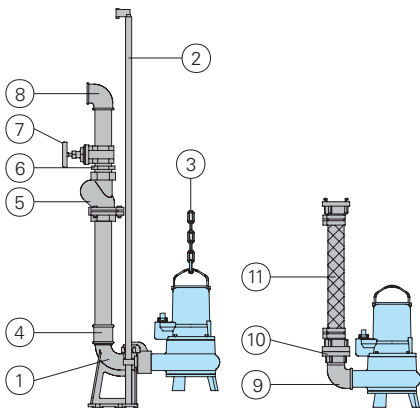
Permanent sump installation Single pump station



Twin pump station



Accessories



Part Description	Dim.	Part.-No.
① Auto-coupling system with counterflange and auto coupling with flange		
- upper slide rail bracket GG KK50/R2"		8604005
- upper slide rail bracket VA KKR50-1/R2"		8604019
○ Auto-coupling system complete or partial in stainless steel	all types	on request

Part Description	Dim.	Part.-No.
○ Screw-kits for installation of coupling system		on request
○ Supporting bracket for guide rail extension	Ø 1" for KKR50-1 Ø 1/2" for KK50	7323714 7320271
② Guide rails, pair per m steel galvanized	Ø 1/2" Ø 1"	2190085 2190135
Stainless steel	Ø 1/2" Ø 1"	2190250 2190252
③ Pump chain sets, testet. With shackle, One- or Two-strand, different lengths and load capacities		on request
④ Galvanized double nipple	BSP 2"F BSP 2"F/ BSP 1 1/2"F	2109102 2102210
⑤ Cast iron swing check valve	BSP 1 1/2"F BSP 2"IF	2212902 2212903
⑥ Galvanized double nipple	BSP 1 1/2"M BSP 2"M	2009020 2009018
⑦ Gate vales MS	BSP 1 1/2"F BSP 2"F	2216015 2216020

Part Description	Dim.	Part.-No.
⑧ 90° galvanized elbow	BSP 1 1/2"F BSP 2"F	2113605 2113606
T-piece for twin-pump arrangement	BSP 1 1/2"IG BSP 2"IG	2114302 2114306
⑨ 90° galvanized elbow	BSP 2"F/M BSP 1 1/2"F/M	2111506 2111505
double socket, galvanized	BSP2"F/BSP1 1/2"F	2102210
⑩ STORZ-fixed coupling	C-2"IG	2010204
STORZ-hose coupling	C-52 mm Ø	2013003
Brass STA-hose coupling	BSP 1 1/2"F	2001513
⑪ Synthetic pressure hose with rubber lining and couplings	10 m length 15 m length 20 m length 30 m length	2611310 2611315 2611320 2611330
C-52 mm dia.		
Reinforced hose per m	Ø 50 mm	2632050
PVC-hose, per m	1 1/2" Ø 38 mm	2621500
Hose bands	1 1/2" 2"	2304854 2306009
○ Control panel for single or twin pump stations for automatic operation		On request

HOMA
P U M P T E C H N O L O G Y

HOMA Pumpenfabrik GmbH
P.O. Box 22 63, D-53814 Neunk.-Seelscheid
Tel. +49 (0) 22 47/702-0, Fax +49 (0) 22 47/702-44
e-mail: info@homa-pumpen.de
www.homapumps.com